

PRESIDIUM[®]

PGCG Software User's Guide

Contents

	Page
1 Installing PGCG Software	3
2 Using the PGCG Software	6
a) Weight Estimator	7
b) Gemstone Estimator	11
c) Specific Gravity (S.G.) Dictionary	13
d) Report	14

1. Installing PGCG Software

- 1) Insert the Presidium® PGCG Software CD into your CD ROM drive. Installation will start automatically.

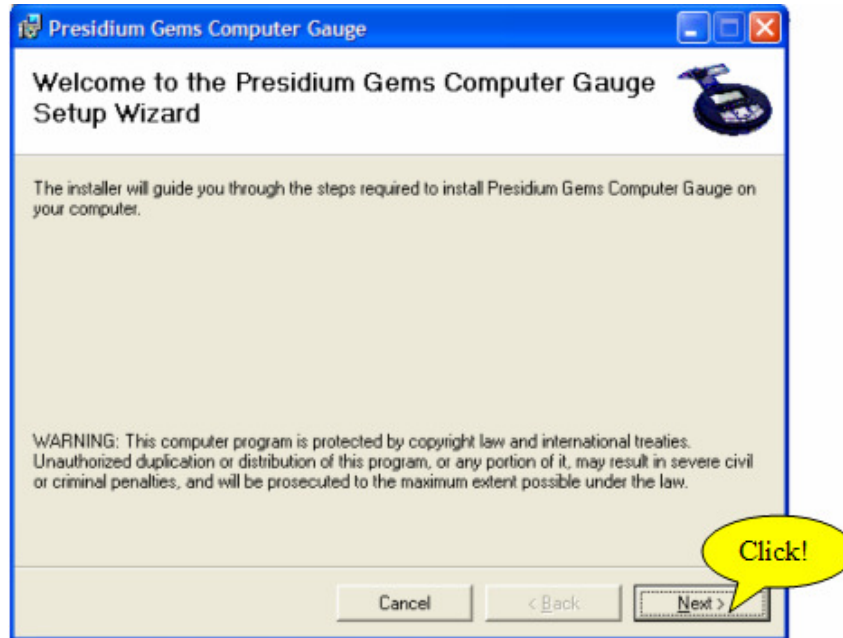


Figure 1.1

- 2) The setup wizard dialog box will appear. Please refer to Figure 1.1 above.
- 3) Click "Next" on the dialog box.
- 4) The setup wizard will bring you to another dialog box. Please refer to Figure 1.2 below.

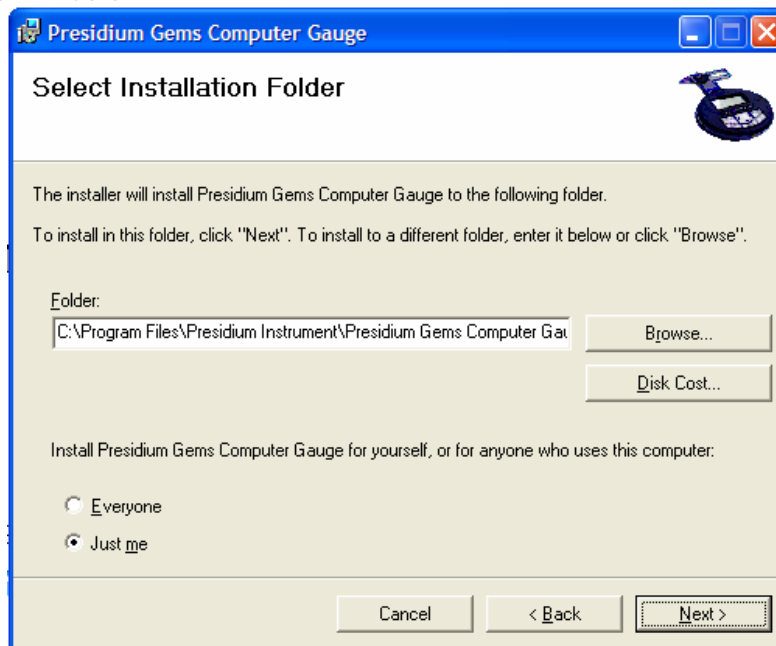


Figure 1.2

- 5) Click “Browse” to choose a folder. If you wish to install PGCG Software for anyone who uses this computer, select “Everyone” or if it is for your own use, select “Just me”. Then, click “Next” to proceed to another dialog box. Please refer to Figure 1.3 below.

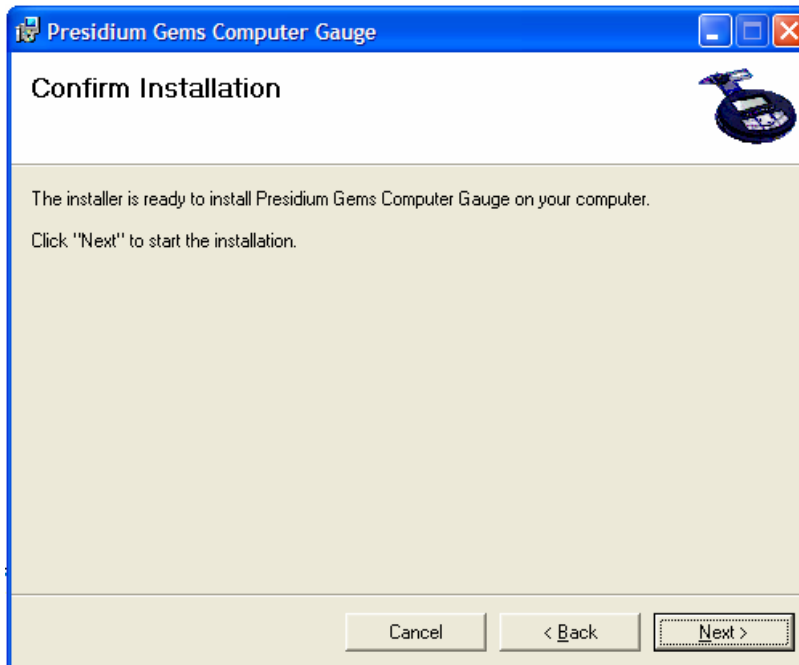


Figure 1.3

- 6) Click “Next” to initiate installation. A dialog box (Figure 1.4) will appear when installation is successful. Click “Close” to finish installation.

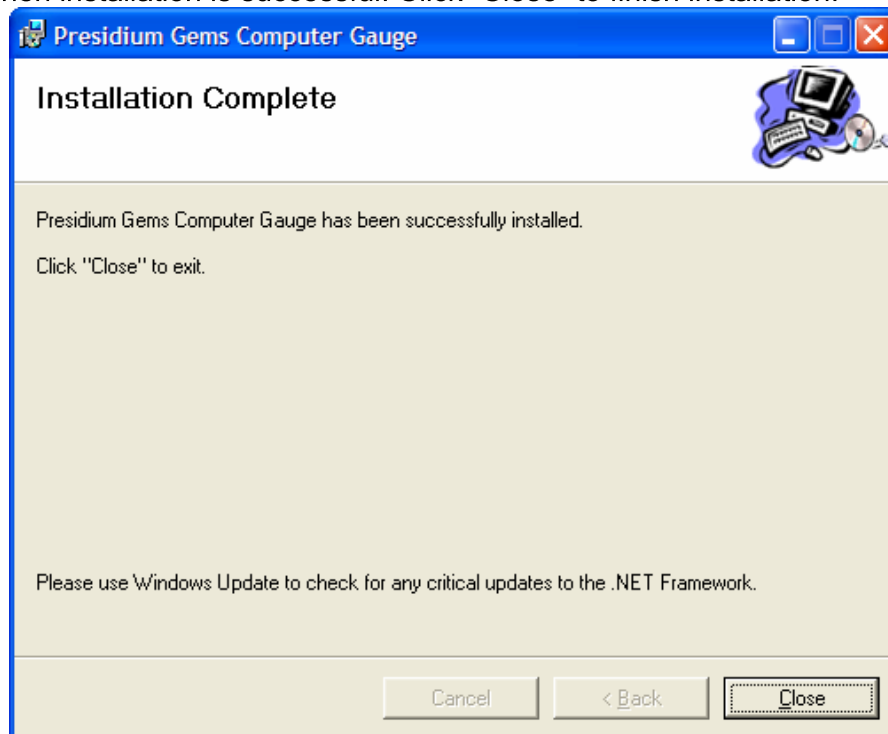


Figure 1.4


- 7) The “PC Interface” icon  will appear on your desktop upon successful installation. Please refer to Figure 1.5.



Figure 1.5

- 8) Double click on the icon to view the interface page.
9) Upon start-up, the software interface is disabled (Please refer to Figure 1.6). To enable the interface, connect the PGCG unit to PC. (Note: The PGCG unit must be connected to PC to enable the software interface.)

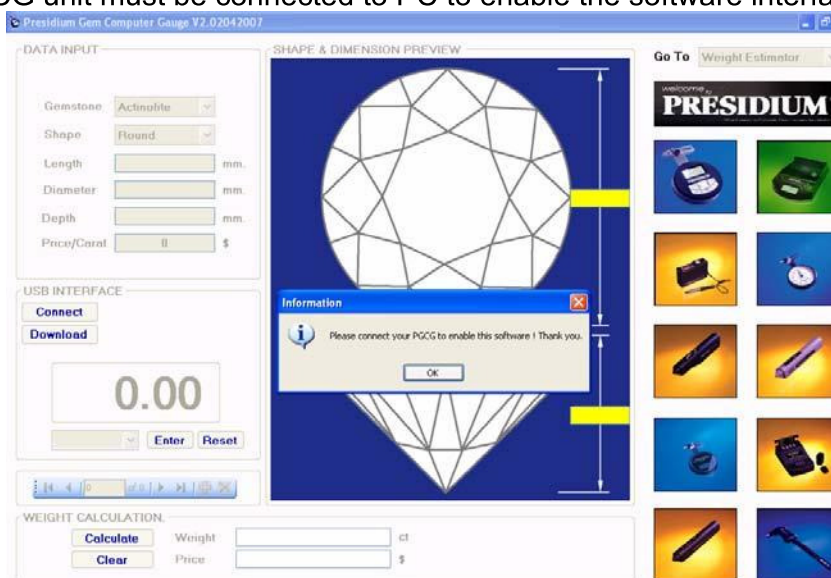


Figure 1.6

2. Using the PGCG Software

The PGCG software has the same functions as the PGCG unit with extended coverage of more gemstones. The functions are as follows:

- Weight Estimator
- Gemstone Estimator
- Specific Gravity (S.G.) Dictionary
- Report

Select the function from “Go To” on the right corner of the interface page by clicking on the “drop down” menu. Please refer to Figure 2.1 below.

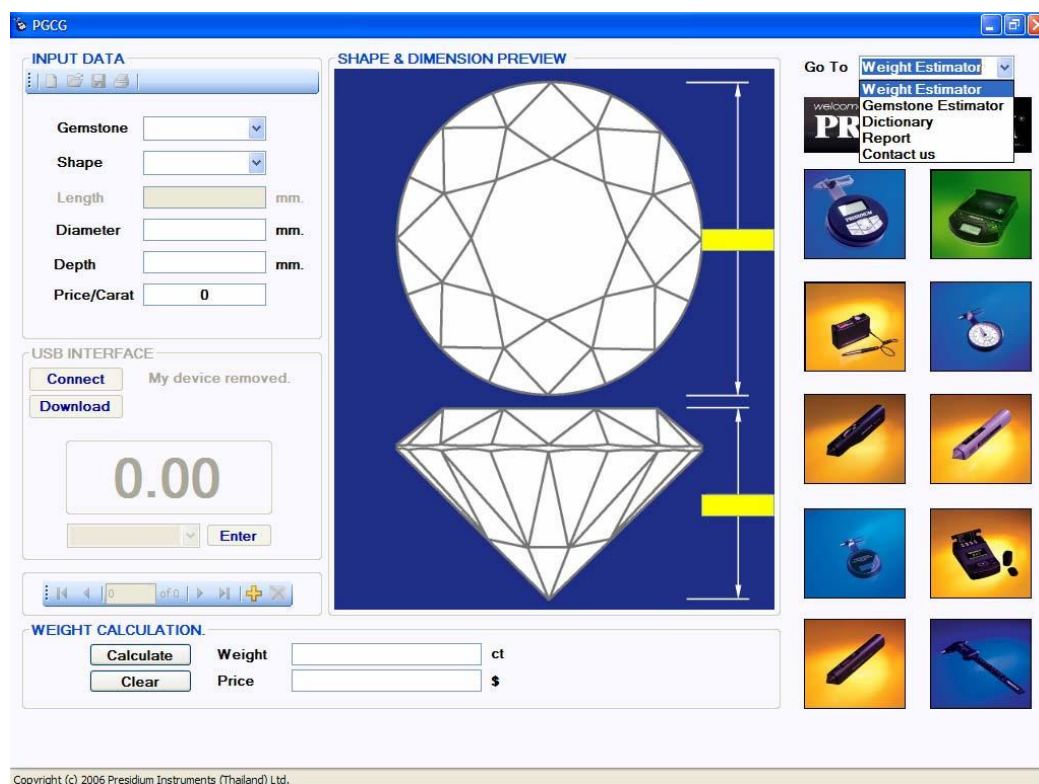


Figure 2.1

Weight Estimator

Weight Estimator is used to estimate the weight of the gemstone from the shape, diameter, depth and nature of the gemstone.

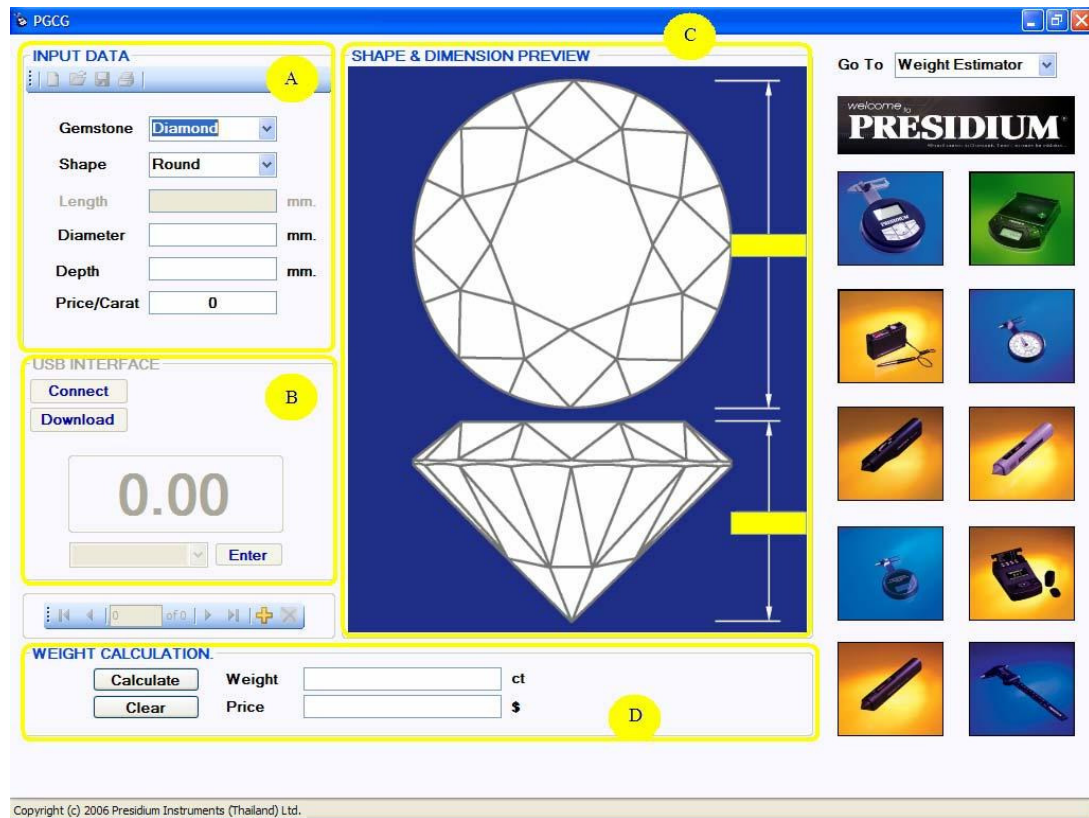


Figure 2.2

The “Weight Estimator” page is divided into four sections. Please refer to Figure 2.2 above.

Section		Description
A	DATA INPUT	Select gemstone and shape of gemstone. The required fields to be filled will be enabled.
B	USB INTERFACE	To establish connection between PGCG unit and PC
C	SHAPE & DIMENSION PREVIEW	Display the values entered in DATA INPUT section
D	WEIGHT CALCULATION	Display the weight in carat and price of gemstone from the data entered in DATA INPUT section

Using the WEIGHT ESTIMATOR function

Users are required to fill in DATA INPUT section.

- 1) Move the cursor to “Gemstone” and click on it. A drop down menu with a list of gemstones will be displayed in alphabetical order. Select a gemstone from the drop down menu.
- 2) Next, move the cursor to “Shape” and click on it. A drop down menu with a list of all available shapes will be displayed. Select the shape of the gemstone from the drop down menu. Please refer to Figure 2.3 below.

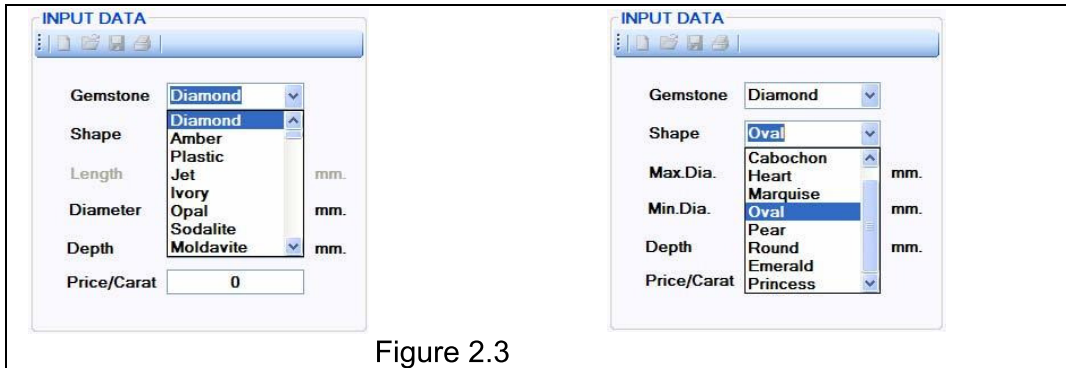


Figure 2.3

3. Upon selecting a shape, the required fields will be enabled (shown in black) while irrelevant field will be disabled (shown in grey). As you select the shape, the preview of the shape and the required dimensions are displayed in the SHAPE AND DIMENSION PREVIEW section.
4. Fill in the required fields. The corresponding values will be displayed in the SHAPE AND DIMENSION PREVIEW section as well. Please refer to Figure 2.4 below.

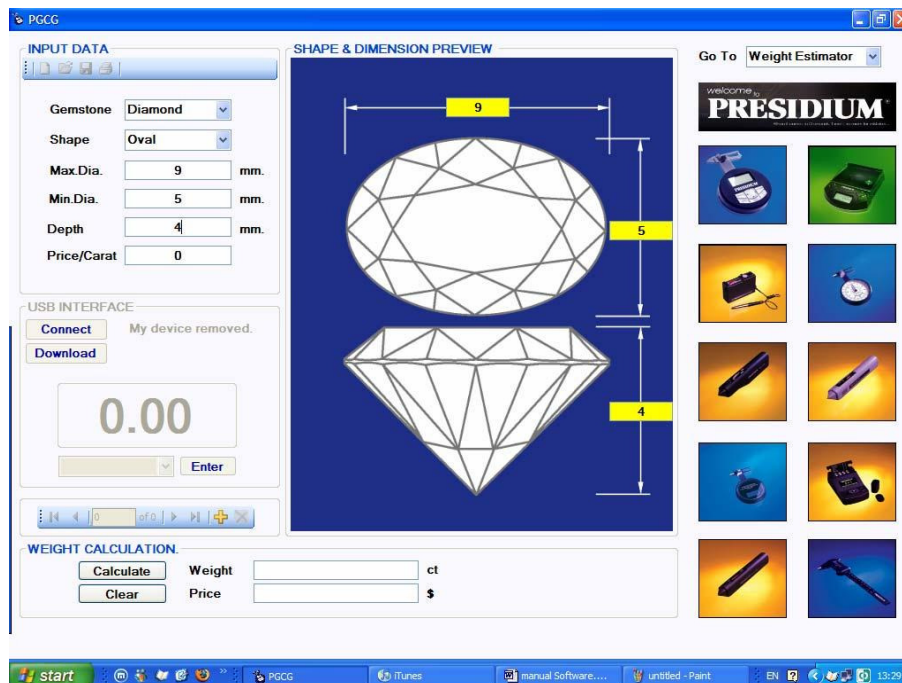
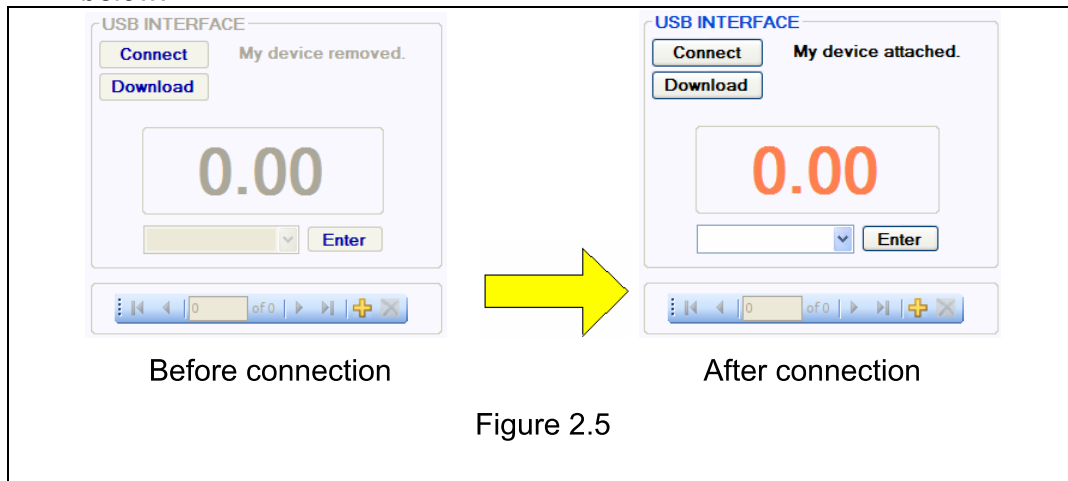


Figure 2.4

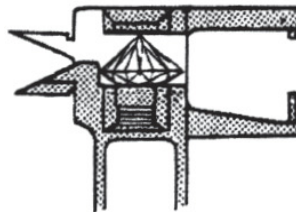
To enhance user-friendliness, user can choose to either enter the required dimension manually or by utilizing the “measuring” mechanism of the PGCG unit.

Measurement from PGCG Unit

1. Connect the PGCG unit to PC by using the USB cable that comes with the package and select the “Gemstone” and “Shape” in DATA INPUT section. When USB cable is connected to PC USB port and device USB port, USB INTERFACE section will be enabled. Please refer to Figure 2.5 below.



2. Press “CONNECT” to establish connection between PGCG unit and PC. (In the event that after pressing “Connect”, the display shows other readings other than 0.00 in Figure 2.5, press “C” button on the PGCG unit for zeroing.)



3. Place the gemstone with the dimension to be measured onto the base anvil.
4. Move the cursor to the drop-down menu. A list of dimensions corresponding to the shape selected will be displayed. Please refer to Figure 2.7. Select the dimension which corresponds to the placement of the gemstone in (3) and press “Enter” to confirm.

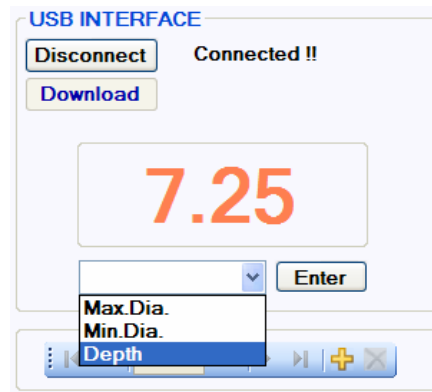


Figure 2.7

5. After pressing “Enter”, the value will be displayed in the DATA INPUT and SHAPE & DIMENSION PREVIEW sections. Please refer to Figure 2.8 below.

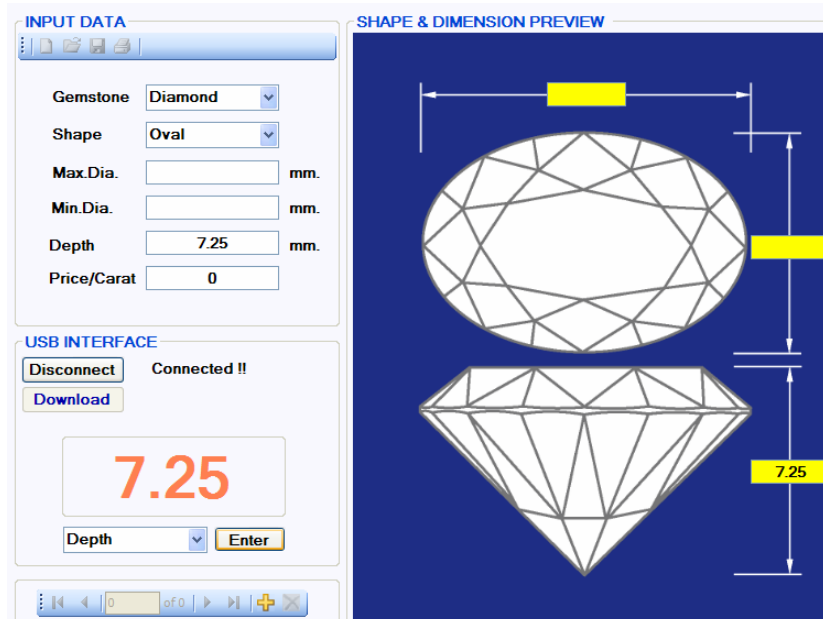


Figure 2.8

6. Repeat steps (3) to (5) to fill in all required dimensions.
7. After that, press “Calculate” at the WEIGHT CALCULATION section to view the result of estimated weight in carat.
8. If user wishes to calculate the estimated price of the gemstone, user may do so by entering the price of the gemstone in the DATA INPUT section and press “Calculate” again. The corresponding weight and price will be displayed in WEIGHT CALCULATION section. Please refer to Figure 2.9.
9. User can clear the results in the WEIGHT CALCULATION section by clicking on “Clear”.



Figure 2.9

GEMSTONE ESTIMATOR

This feature is used to identify possible gemstones (for different gemstones having similar size and shape) by using the Specific Gravity (S.G.) property of gemstones.

Using GEMSTONE ESTIMATOR function

1. User is required to fill in the DATA INPUT section. The method of filling this section is the same as that for WEIGHT ESTIMATOR section. However, for this function, “Gemstone” and “Price/carat” are not required.
2. Press “Calculate” at the S.G. CALCULATION section to find the S.G. value. The list of possible gemstones is displayed in ESTIMATED GEMSTONE section while the S.G. value is displayed in S.G. CALCULATION section. Please refer to Figure 2.10.

PGCG

INPUT DATA

Shape: Round

Weight: 6.1 ct

Length: mm

Diameter: 10 mm

Depth: 10 mm

USB INTERFACE

Connect

Download

0.00

Enter

S.G. CALCULATION

Calculate

Clear

S.G.: 1 3.2 of Gemstone(Exclude Diamond)

S.G.: 2 3.52 of Diamond only

Estimated Gemstones

StoneName	SgAverage	RI	HARDNESS
Diamond	3.52	2.418	10
Apatite	3.18	1.634-1.637	5
Zoisite	3.3	1.695	6.5
Odontolite	3.1	1.61-1.65	5-6
Clorastrolite	3.2	-	-
Dumortierite	3.3	1.686	7 - 8.5

Go To: Gemstone Estimat

welcome to PRESIDIUM

Icons representing various gemstones and jewelry.

Copyright (c) 2006 Presidium Instruments (Thailand) Ltd.

Figure 2.10

If the calculated S.G. value does not correspond to any values of all Gemstones in the database, a dialog box will appear displaying “Not Found in Record”. Please refer to figure on right.

Specific Gravity (S.G) Dictionary

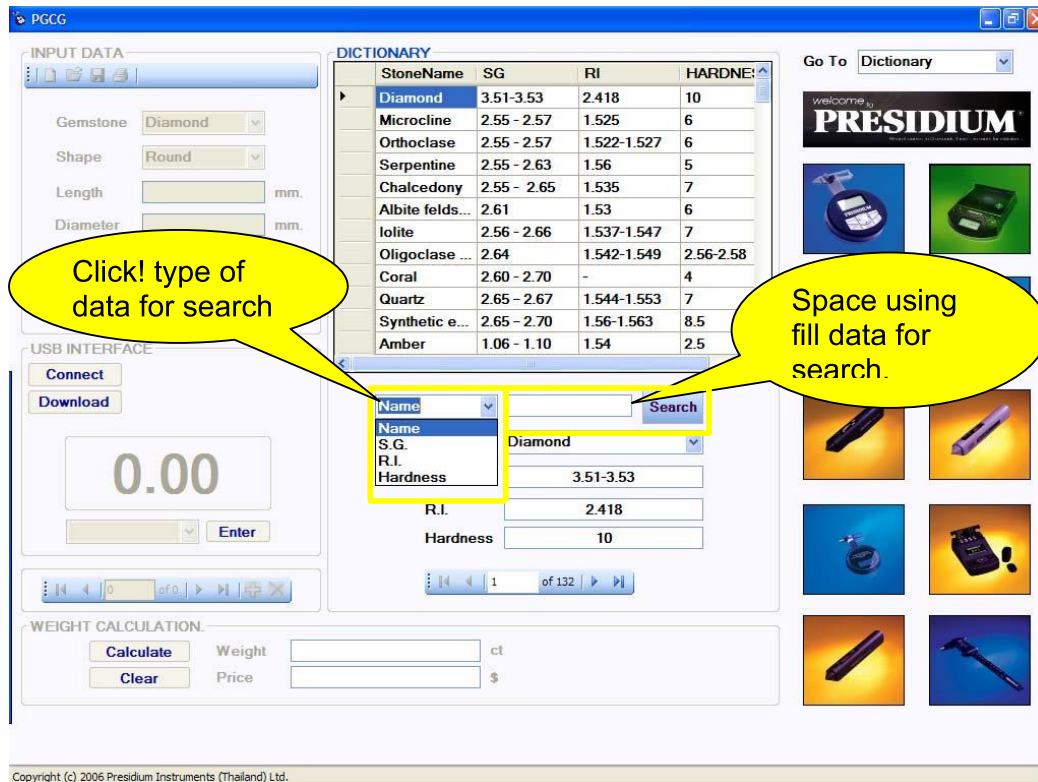


Figure 2.12

Using S.G. Dictionary function

Search for Gemstone can be done in the following 4 methods:

Search by name of Gemstone

Click the drop down menu and a list of available searching methods will be displayed. Choose "Name" and enter the name of the gemstone in the space provided and press "Search".

Search by S.G. value of Gemstone

From the drop down menu, choose "S.G." and type in the S.G. value of the gemstone in the space provided and press "Search".

Search by Refractive Index (R.I.) value of Gemstone

From the drop down menu, choose "R.I." and type in the R.I. value of the gemstone in the space provided and press "Search".

Search by Hardness value of gemstone

From the drop down menu, choose "Hardness" and type in the Hardness value of the gemstone in the space provided and press "Search".

REPORT

PGCG

INPUT DATA

Gemstone: Diamond
Shape: Round
Length: mm.
Diameter: mm.
Depth: mm.
Price/Carat: 0

USB INTERFACE

Connect
Download

0.00

Enter

WEIGHT CALCULATION

Calculate Clear Weight: ct Price: \$

REPORT

Page Heading

StoneID	StoneName	Shape	Length(mm)
*			

Go To: Report

Welcome to **PRESIDIUM**

Copyright (c) 2006 Presidium Instruments (Thailand) Ltd.

Figure 2.13

Report function has the following features:

- Load and view data
- Create new data
- Managing data in Report
- Save Report
- Print Report

Load and view data

Data could be viewed in the following methods:

View a saved data

- Press "OPEN" (📁) in the DATA INPUT section to show a list of saved Reports.
- Select a Report to be displayed and press "Open".

View data obtained from PGCG Unit

- Connect PGCG unit to PC by using the USB cable.
- Once connection is established, press "Download" to download all data saved in "Report" function in the PGCG unit.
- The data from "Report" function will be downloaded to the PC. Please refer to figure on right.



Create new Report

- Click on “New”() to create new Report.

Managing data in Report

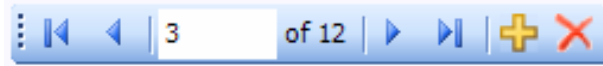







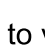

Figure 2.17

This tool enables user to “Add” or “Delete” data in report and allows user to view data in Report.


a) Add or Delete data in Report

- To add data, choose gemstone and shape and fill in all the required fields. (Similar to that of DATA INPUT in WEIGHT ESTIMATOR).
- Press “Calculate” to display result.
- Press “Add” () and the data will be displayed in a table in the REPORT section.
- To delete data, click on the row in which data were to be deleted and press “Delete” (). The data in the corresponding row will be deleted.


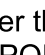
b) Browse other data in Report

- If there are more than one data in the Report, users are able to scroll backward and forward to view the data in the Report.
- Click () or () to view previous or next data and click () or () to go to first or last data, respectively.
-  indicates the total data in the Report and the data currently being viewed.

Save Report

- After creating a new report or modified data in a Report, user can save report by pressing “save” () from the DATA INPUT section. Key in the name of the Report and click “Save”.

Printing Report

- User is able to print report by pressing () in the DATA INPUT section. Before pressing (), user can first enter the name of the report to be printed in the “Page Heading” at the REPORT section. Please refer to Figure 2.22.

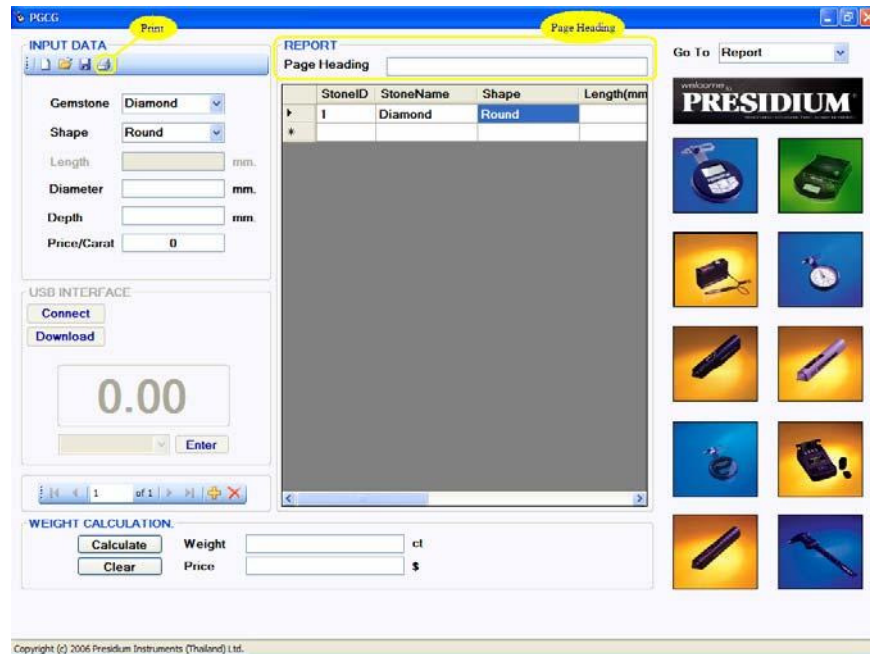


Figure 2.22

- Choose the preferred setting in the “Page Setup”. Choose “Landscape” at the Orientation section and click “Ok”. Please refer to Figure 2.23

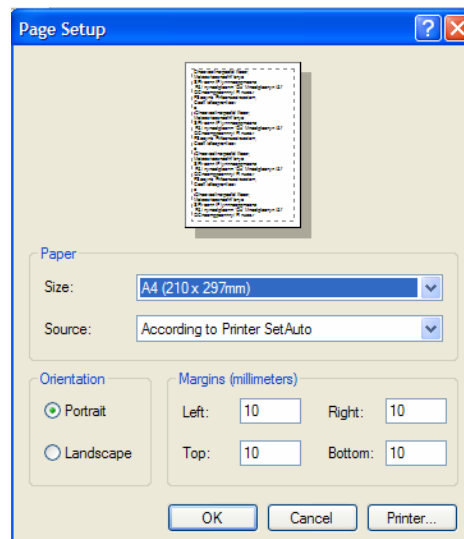



Figure 2.23

- A preview of the Report to be printed will be shown.
- If no further changes to be made, press (). Please refer to Figure 2.24.

Print preview

Close

Page 1

StoneID	StoneName	Shape	Length	Width	Diameter	MaxDia	MinDia	Depth	Weight
1	Diamond	Round			7.89			10.08	3.825
2	Pearl	Round			12.72				14.529
3	Topaz	Emerald	5.93	7.43				8.64	3.517
4	Sapphire	Marquise	12.76	14.72				11.4	16.7
5	Opal	Heart	8.42	10.94				12.22	3.633
6	Fluorite	Pear	11.84	10.71				14.45	11.006
7	Rhodonite	Cushion	9.37	13.51				12.21	12.982
8	Quartz	Square	8.29	6.99				7.6	3.11
9	Nephrite	Cabochon	9.59	11.63				13.51	11.778
10	Verdite	Square	9.84	12.32				14.84	13.85
11	Glass	Pear	21.33	23.03				20.54	64.799
12	Ivory	Oval				21.02	22.24	20.8	37.444
13	Jadeite	Round			21.3			22.38	64.736
14	Pearl	Round			26.69				134.22
15	Hematite	Heart	14.55	18.48				16.17	42.184
16	Diamond	Marquise	5	5				5	0.695

Develop by Presidium Team. 12/2/2550 Page 1

Figure 2.24